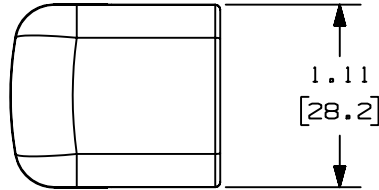


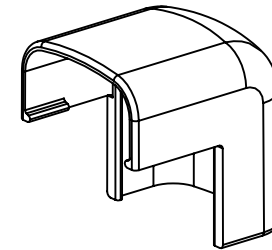
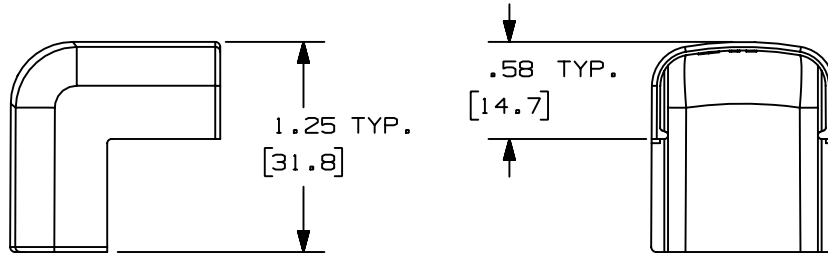
THIS COPY IS PROVIDED ON A RESTRICTED BASIS AND IS NOT TO BE USED IN ANY WAY DETRIMENTAL TO THE INTERESTS OF PANDUIT CORP.



$\triangle B$	PANDUIT P/N	WEIGHT
$\triangle C$	OCF5	0.96 LB/100 PCS. (437g/100 PCS.)

$\triangle D$ NOTES:

1. SEE CURRENT CATALOG FOR ADDITIONAL PART NUMBER SUFFIXES TO INDICATE COLOR AND OR PACKAGE QUANTITY.
2. DIMENSIONS IN PARENTHESIS ARE IN METRIC.



$\triangle E$

CAD FILENAME/LAYERS D34474BB_DC_OCF5_01.prt

					PANDUIT CORP. TINLEY PARK, ILLINOIS		
					OUTSIDE CORNER FITTING (OCF5) CUSTOMER DRAWING		
					UNLESS OTHERWISE SPECIFIED, DIMENSIONAL TOLERANCES ARE:		UNLESS OTHERWISE SPECIFIED, ALL DIMENSIONS ARE GIVEN IN INCHES, THIRD ANGLE PROJECTION.
6	7-3-02	JHNRMH	F.	REVISED MATERIAL IN DRAWING TITLE BLOCK.	16866	RGRD	RGRD
5	8-28-00	MSO HIW	E.	REVISED AND REDRAWN ON CAD.	16866	HIW	HIW
4	10-3-91	DW CF	D.	REVISED NOTE AND REMOVED COLOR FROM DRAWING.	16866		CF
3	2-28-91	DW CF	C.	REVISED COLORS: OMIT BG, LI, LG. ADDED INT. WHITE AND INT. GRAY.	16866		WJB
2	12-2-87	LDB WJB	B.	ADDED PART NUMBERS OCF5E1 AND OCF5L1.	16866		WJB
1	5-14-82	KJS JK	A.	POLYSTYRENE WAS ABS.			JAK
R	9-14-81	KJS HP		DRAWING RELEASED			HP
REV	DATE	BY	CHK	DESCRIPTION	ECN - R	CUST	SUP
					DRAWN BY KJS MAT'L: ABS $\triangle F$		SCALE FULL
					DATE 9-10-81		DRAWING NO. SS-16866
					CHK'D JK $\triangle A$		DWG SIZE A